

ADDENDUM NO. 2

A NEW OFFICE BUILDING FOR
FRONT ROH ENTERPRISES

9441 Fenton Road
Mundy Township, MI 48439

COMMISSION NO. 2008-17

April 24, 2009

ENGINEER

Engineering Design Associates, PC
2016 Robert T. Longway
Flint, MI 48503

PART 1 - GENERAL

- 1.01 This Addendum is issued prior to the receipt of Proposals to inform the Bidders of certain changes and is issued by the Engineer to the Contractors known as holders of the Contract Documents.
- 1.02 The Contract Documents include the Specifications (Commission No. 2008-17 dated April 1, 2009).
- 1.03 The following changes, revisions, corrections, clarifications and additions have been made in the Specifications and Drawings and shall be noted by the Contractor or Subcontractor responsible for same.
- 1.04 This Addendum shall be considered as a part of the Contract Documents.
- 1.05 Except as otherwise specifically mentioned, the general character of the work required by this Addendum shall be the same as originally specified, and all incidentals required in connection with the Work herein described shall be included even though not specifically mentioned.
- 1.06 The Bidder shall properly indicate in the appropriate space on their Proposal Form, confirmation of reception of this Addendum.

PART 2 – ITEMS OF ADDENDUM

- 2.01 Revise Sheet ME1 – Mechanical & Electrical Site Plan:
 - a. Gas service, regulator, shutoff and meter are by CMS Energy direct to the Owner.
 - b. Change generator gas load to 240 cfh and total gas load to 475 cfh.
 - c. Water service is extended into the Lower Level and capped by the Site Work Contractor.
 - d. Change finished floor elevations as follows: First Floor to 860.50'; Lower level to 849.83'.
 - e. Change 6" San to IE 847.83'.
- 2.02 Revise Sheet M-2 – Basement Floor Plan – Plumbing – as follows:
 - a. Change finished floor elevation to 849.83'.
 - b. Provide trap primer on floor drain near water service entrance.
 - c. Extend and connect a 3/8" CW tube with shutoff to each humidifier. Extend and spill D over FD.
 - d. Revise piping as shown on attached Sketch SK-M1.
- 2.03 Revise Sheet M-3 – Floor Plan – Plumbing – as follows:
 - a. Furnish and install point-of-use TWV's at Lav's in Toilet-103, Toilet-108, and Toilet-110.
 - b. Change finished floor elevation to 860.50'.
 - c. Change 2"V down in chase at Toilet-111 to 4"V. Change 3" VTR to 4".

- 2.04 Revise Sheet M-4 – Basement Plan – HVAC – as follows:
- a. Furnish and install an electronic air cleaner and humidifier at each furnace unit.
 - b. Provide cooling controls for CDU-2 to allow low ambient operation at 0F.
- 2.05 Revise Sheet M-5 – Floor Plan-HVAC: Change gas supply to generator to 1”.
- 2.06 Revise Sheet M-6 – Specifications – as follows:
- a. Insert in Section 15000 – General Requirements – the following:
The Base Bid price shall include duct wrap insulation (and not include sound lining).
An Alternate Price may be submitted to sound-line the ducts in lieu of wrapping.
 - b. Add Section 15300 - Fire Protection:

Furnish and install a complete wet pipe fire protection system throughout the Lower Level, in the laundry chute and as required. Design the system hydraulically for Ordinary Hazard Group 1 coverage. Distribution piping may be exposed in the Lower Level. Arrange for system drainage. Provide fire department connection and horn-strobe mounted on the building exterior. Provide a backflow prevention device with a 5/8” bypass water meter across the device. A security system will be provided as a separate contract with the Owner. Assist in coordinating points of interface between the fire protection and security systems with that Contractor.

All work and materials shall be in accordance with NFPA #13, the Authority Having Jurisdiction (AHJ), and the Owner’s Fire Insurance Underwriter. The Contractor shall be responsible for all permits, fees, inspections, submittals, and related expenses, and shall be licensed to perform the Work in the State of Michigan.

Products: New, unused, UL Listed, with threads matching local Fire Department standards.
Piping: ASTM A795 or A55 Schedule 40 black steel with Class 125 cast iron threaded, roll- or cut-grooved mechanical fittings (2” and less), or Schedule 10 black steel (2” and above) with ASTM A47 cast malleable iron fittings with roll-grooved mechanical joints.
Hangers: Adjustable clevis style with solid threaded steel rod, spaced and attached per NFPA.
Valves, Generally: Rated for 175 psig WWP; body labeled with manufacturer’s name, class and approvals; UL Listed, FM approved; use valves by same manufacturer when feasible.
Gate (1/2” – 2”): Bronze body, bonnet, wedge disc; malleable handwheel; Os&Y.
Gate (2-1/2” – 4”): Cast iron body, bonnet and yoke; cast iron double disc, bronze mounted, OS&Y.
Swing Check (1/2” -3”):Bronze body, cap, hinge, disc holder; BUNA-N disc.
Butterfly: Ductile iron body and disc; wafer, lug or grooved style ends; EPDM rubber seat, lever.
System Control: Use gate style unless butterfly is approved by the AHJ; provisions for mounting a tamper-detection switch.
Heads: Viking, GEM, Star or equal; UL Listed and FM approved for the hazard; brass body, deflector fusible link; may be quick response classified.
Horn-Strobe and Flow Switch: Furnish and install per AHJ requirements. Wiring is by the Electrical Contractor.

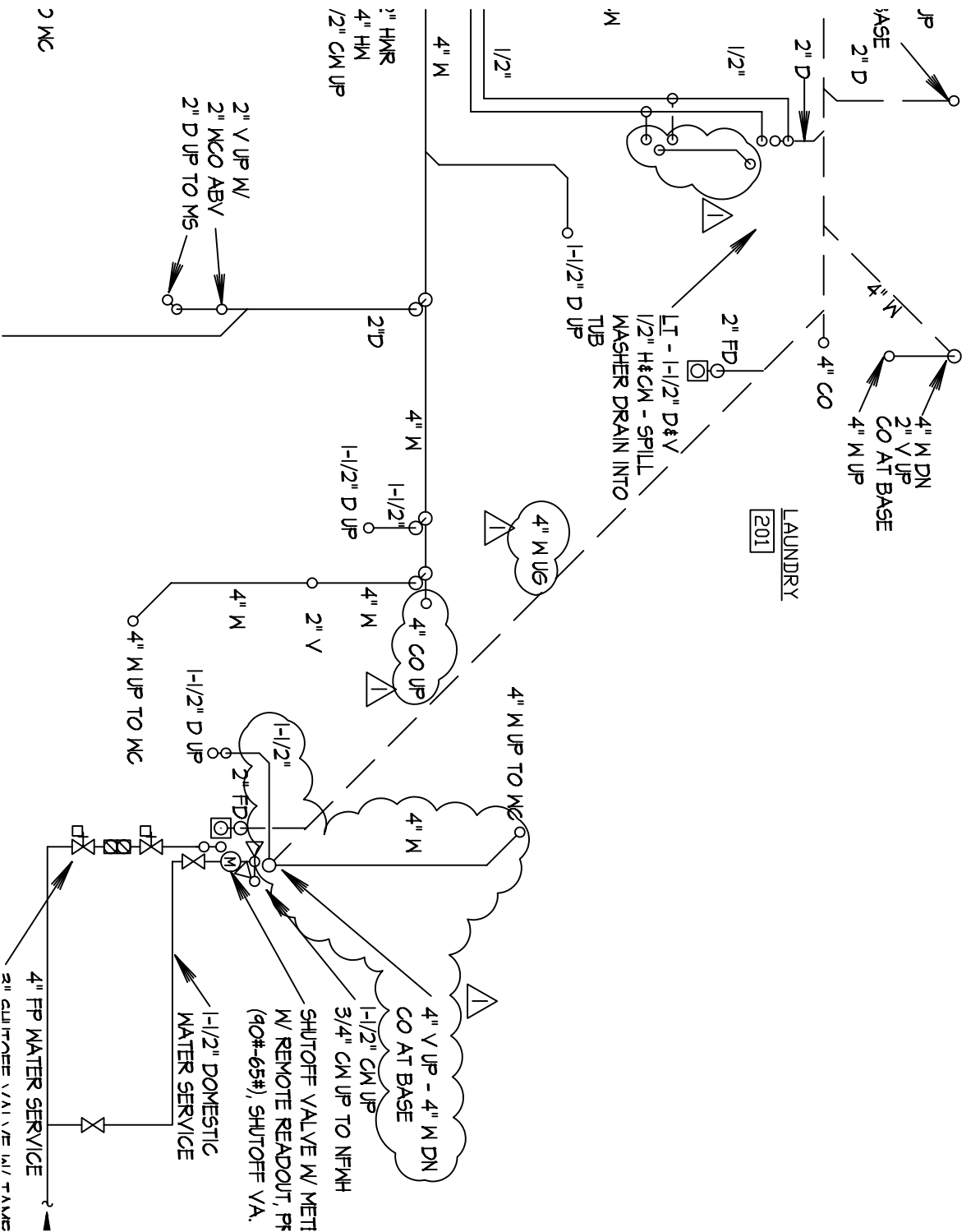
Other: Flush and test the system as required. Arrange for system drainage. Provide signs, drains and test connections. Provide metal cabinet containing spare heads of each type used with wrench for each type. Painting of fire protection system items is by the Painting Contractor.
- 2.07 The use of Metal-clad cable, (Type MC), will be acceptable where permitted by the 2005 National Electrical Code, except where running through concrete walls and floors, in masonry walls, Patient Care areas, outdoors, and areas subject to physical abuse.
- 2.08 WattStopper is an acceptable occupancy sensor system manufacturer for this project.
- 2.09 Furnaces 1 and 2 have a humidifier and electronic air cleaner, 120V-1PH, that shall be wired by the Electrical

Contractor. Utilize same branch circuit as respective furnace.

- 2.10 Electrical Contractor shall wire flow switch and warning light, provided by the Fire Suppression Contractor. Outdoor warning light shall be mounted 8'-3" OC, above finished floor, (verify with the local authority having jurisdiction), and centered above the Fire Department Connection. Refer to Floor Plan - Plumbing, Sheet M-3.
- 2.11 Change location of flush mounted panelboard, LP-B, to Corridor 113, centered with Staff Area 116 closet.
- 2.12 Electrical Contractor shall install and wire three additional Type 'M' downlights in east roof overhang near the two parking bays and dumpster. Evenly space downlights 8'-3" OC apart. Wire downlights on branch circuit A-10. Wiring shall be #10 AWG to all exterior building lighting.
- 2.13 Change the natural gas generator size from 12KW to 17KW, 120/240V, 1-Phase-3wire, 60Hz, Kohler 17RES, with vibration isolators, and sound attenuation weather enclosure. Generator main circuit breaker; UL listed, molded case thermal magnetic type rated at 70 Amps, 2 Pole, 240 Volts. Battery, battery charger, and heater shall be as recommended by the manufacturer. Size of reinforced concrete pad with 1" chamfer edges shall be 60" long, 42" wide, 8" deep, (4" above and below grade). Verify size of pad with manufacturer. Generator shall be wired complete and tested, per manufacturer specifications, warranted and guaranteed. Connections at the generator shall be made with liquid-tight flexible steel conduit(s).

END OF ADDENDUM

NEW OFFICE BUILDING FOR FRONT ROH ENTERPRISES
 9441 FENTON ROAD - MUNDY TOWNSHIP, MI
 TED HU ASSOCIATES, INC - GRAND BLANC, MI
 ADDENDUM No. 2 - APRIL 24, 2009 - DWG SK-M1 OF 1



LOWER LEVEL PLAN - PLUMBING
 SCALE 1/4" = 1'-0"